

... TEAM CLUTCH

TEAM CLUTCH



312

3N2SPORTS.COM

2022 TEAM CATALOG

PRODUCT CATALOG

FOOTWEAR

BASEBALL + FASTPITCH 5-6

TURFS + TRAINERS 9

APPAREL

MEN'S + WOMEN'S 11-18

STOCK UNIFORMS

MEN'S 16-17

YOUTH 18-19

WOMEN'S 20-23

GEAR

BACKPACKS, BAGS & MORE 21-23

BATS

BASEBALL BATS 24-25

TEAM CLUTCH

BASEBALL BATS 26-27

TEAM LOCKER

ONLINE ORDERING 28-29

CUSTOM

MEN'S 32-37

WOMEN'S 38-40

GEAR 41

RETRO 42

HATS 43

TEAM

UNIFORM + GEAR OPTIONS 44-47

REFERENCE

SIZING 48-49

2022



FOOTWEAR

CLEATS, TURFS & TRAINERS





Sport a look that is as dynamic as your game. With its ShimmerStep iridescent logo mark, the **3N2 LO-PRO BASEBALL CLEAT** makes an undeniable impact on the diamond. As lighting conditions and angles change, so does the color of the ShimmerStep material. The heart of **LO-PRO** performance is a proprietary nine-spoke configuration with optimized cleat placement and variable cleat lengths that enhance lateral quickness and enable explosive acceleration. Despite their outer toughness, these cleats remain comfortable thanks to a full-length EVA midsole that supports and cushions the forefoot, minimizing cleat pressure points. The upper is high-grade patent genuine leather and performance nubuck at the mid foot. The toe is shielded against wear with a rugged TPU bumper and film for extra protection. Upper and heel construction provide lightweight support and a comfortable fit – a pro cleat that feels like a running shoe.

LO-PRO MEN'S

BLACK 6238-01

MSRP: **\$79.99**

MEN'S SIZING: 6-12.5

Half Sizes, 13, 14, 15

(Women order 1.5 size down)

WEIGHT: 13.1 ounces



Legendary 3N2 performance in a versatile starter cleat. The **ROOKIE ELITE** features synthetic leather and mesh venting for flexibility and breathability, a lightweight midsole and a proprietary, molded outsole configuration to boost speed and improve traction. With its ShimmerStep iridescent logo mark, the **3N2 ROOKIE ELITE CLEAT** makes an undeniable impact on the diamond. As lighting conditions and angles change, so does the color of the ShimmerStep material. Reflectant piping on the upper makes sure you are noticed as you round 1st base.

ROOKIE ELITE YOUTH

BLACK 8725-01
PINK 8725-10

MSRP: **\$34.99**

YOUTH SIZING: 1-6 Half Sizes

WEIGHT: 7.9 ounces



The DOM-N-8 is the latest in 3N2's line of dynamic, pro-performance fastpitch cleats. With its ShimmerStep iridescent logo mark, the **3N2 DOM-N-8 FASTPITCH CLEAT** makes an undeniable impact on the diamond. As lighting conditions and angles change, so does the color of the ShimmerStep material. Features a revolutionized ankle stabilization system with highly cushioned ankle collar for maximum comfort. The upper is high-grade patent genuine leather and performance nubuck at the mid foot. The toe is shielded against wear with a rugged TPU bumper and film for extra protection. Upper and heel construction provide lightweight support and a comfortable fit. Also features O-ZONE, powered by patented technology, which defends against insole odor. Prototyped, tested and adored by professional fastpitch athletes.

DOM-N-8 WOMEN'S

BLACK 5335-01
WHITE 5335-06
ROYAL 5335-02
RED 5335-35

MSRP: **\$79.99**

WOMEN'S SIZING: 5-12 Half Sizes

WEIGHT: 13 ounces



DOM-N-8 PT WOMEN'S

BLACK 5345-01
WHITE 5345-06

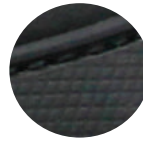
MSRP: **\$89.99**

WOMEN'S SIZING: 5-12 Half Sizes

WEIGHT: 13 ounces



PITCHING TOE



Rough and ready. The **3N2 DOM-N-8 PT** is a highly durable, pro-performance fastpitch cleat featuring our insanely tough PT Pitching Toe – designed and engineered for highly fluid toe drag and made from a revolutionary rubber compound that is lighter and more durable than traditional pitching toes. Features a pro-caliber ankle stabilization system with highly cushioned ankle collar for maximum comfort, lightweight suede and patent leather construction, and rugged toe bumper. Also features O-ZONE, powered by patented Agion® technology, which defends against insole odor. Prototyped, tested and adored by professional fastpitch athletes.

DOM-N-8 TPU WOMEN'S

BLACK 5445-01

MSRP: **\$74.99**

WOMEN'S SIZING: 5-12 Half Sizes

WEIGHT: 13 ounces



Sport a look that is as dynamic as your game. With its ShimmerStep iridescent logo mark, the **3N2 DOM-N-8 TPU** fastpitch cleat makes an undeniable impact on the diamond. As lighting conditions and angles change, so does the color of the ShimmerStep material. The upper is high-grade patent genuine leather and performance nubuck at the mid foot. The toe is shielded against wear with a rugged TPU bumper and film for extra protection. Upper and heel construction provide lightweight support and a comfortable fit – a pro cleat that feels like a running shoe. The **DOM-N-8 TPU** rides on a dual-injection POGO midsole and our cutting-edge ROTOG RIP 12-cleat outsole configuration. Prototyped, tested and adored by professional fastpitch athletes.

DOM-N-8 TPU PT WOMEN'S

BLACK 5355-01
WHITE 5355-06

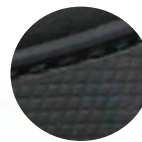
MSRP: **\$84.99**

WOMEN'S SIZING: 5-12 Half Sizes

WEIGHT: 13 ounces



PITCHING TOE



The **3N2 DOM-N-8 TPU PT** is the ultimate in durability and versatility – a go-anywhere, do-anything fastpitch performer that rides on a rugged ROTOG RIP TPU outsole and features the insanely tough PT Pitching Toe. The PT Pitching Toe is designed and engineered for highly fluid toe drag and is made from a revolutionary rubber compound that is lighter and more durable than traditional pitching toes. The **DOM-N-8 TPU PT** features a pro-caliber ankle stabilization system with highly cushioned ankle collar for maximum comfort, lightweight suede and patent leather construction and a rugged toe bumper. Also features O-ZONE, powered by patented Agion® technology, which defends against insole odor. Prototyped, tested and adored by professional fastpitch athletes.





K-MIT



The **3N2 K-NIT** looks as good as it performs. It's crafted using a combination of supportive woven yarn patterns that provide support and breathability, with **BOUNCEBACK** technology in the midsole for springy, responsive cushioning. The **KZONE** sockliner wicks away moisture, keeping your foot cool and dry. The proprietary **HYPER-LIFT** insole is fused with memory foam to provide maximum comfort and support. The feather light 3N2 K-NiT weighs in at 7oz. Perfect for any training routine or everyday use.

K-NIT TRAINER UNISEX



BLACK	7930-01
NAVY	7930-03
BLACK / YELLOW	7930-0171
RED	7930-35
GRAPHITE	7930-73

MSRP: \$98.99

MEN'S SIZING: 6-12.5

Half Sizes, 13

[Women order 1 size down]

WEIGHT: 7.0 ounces



If you are looking for lightweight softball turfs that are big on comfort and performance, move forward with the **MOFO TRAINER**. Featuring a genuine leather and **METAMESH** upper with double-stitched reinforcement in high-wear areas, and our feather-light **GLIDE** midsole designed specifically for relieving knee and back pressure, the **MOFO TRAINER** is perfect for everything from light training to grueling, weekend back-to-backs. A **TPU** shank in the arch and molded heel counter work to ensure superior fit and stability, while its **IGNITE** outsole – boasting a classic, single-form tread pattern – provides uniform support and rotational traction for confidently powering around bases.

MOFO TRAINER UNISEX



RED	7845-35
BLACK	7845-01
NAVY	7845-03

MSRP: \$84.70

MEN'S SIZING: 3.5-12.5

Half Sizes, 13, 14, 15

[Women order 1.5 size down]

WEIGHT: 12.0 ounces



The **VIPER TURF** is lightweight but rugged, featuring a pro-grade suede and patent leather upper. Rides on a feather-light **GLIDE** midsole designed specifically for relieving knee and back pressure – perfect for anything from light training to grueling weekend back to backs. A **TPU** shank in the arch and molded heel counter work to ensure superior fit and stability, while its **IGNITE** outsole – boasting a classic, single-form tread pattern – provides uniform support and rotational traction for confidently powering around bases. An **O-ZONE** sockliner and insole provides odor and fungal protection.

VIPER TURF UNISEX

BLACK 6539-01

MSRP: \$84.69

MEN'S SIZING: 8-12.5

Half Sizes, 13, 14, 15

[Women order 1.5 size down]

WEIGHT: 12.5 ounces



STOCK UNIFORMS & APPAREL

TEC HOODIE

UNISEX



Style and performance. The wear-anywhere **3N2 TEC HOODIE** features a drawstring hood, fleece interior, and Polyzone™ microfiber construction for durability and lightweight performance.



BLACK	3450-01
GREY	3450-05
NAVY	3450-03

MSRP: \$60.50

UNISEX SIZING: YS, YM, YL, XS, S, M, L, XL, XXL, XXXL

OUTRIDER TRAINING SHORTS

UNISEX

Stay ahead of the pack and on top of your game in light but rugged **3N2 OUTRIDER TRAINING SHORTS**. Dri-FIT construction wicks away sweat to keep you dry and comfortable, while its wide waistband and easy draw cord provides a snug yet relaxed fit. Unique heathered paneling along the sides of the short and across the back waistband provide added comfort and enhanced range of motion.



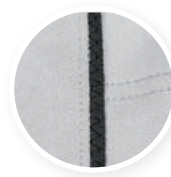
BLACK	4002-01
WHITE	4002-06
NAVY	4002-03
ROYAL	4002-02
RED	4002-35
GRAPHITE	4002-55

MSRP: \$30.80

UNISEX SIZING: YS, YM, YL, XS, S, M, L, XL, XXL, XXXL



A traditional cut ankle length pant made with high performance 14-ounce terry micro yarn 100% polyester. Pants feature double front belt loops, non-roll woven elastic waist, metal zippered fly front with two snap closure, two set-in back pockets, double-ply knees. Open unhemmed ankle finish with no elastic. 3N2 logo embroidered on left pocket. Add outer seam piping for an additional charge.



PIPING AVAILABLE



PRO POLY PANTS

MEN'S

GREY	2540-05
WHITE	2540-06

MSRP: \$54.99 ADULT

ADULT SIZING: S, M, L, XL, XXL
YOUTH SIZING: S, M, L, XL



**PRO
CLUTCH
PANT**

PROFESSIONAL LEAGUE
Quick Performance
Model 271 2029



PRO PANTS CLUTCH



GRIPPER BAND
FUNCTION & COMFORT



POLY-STRETCH LITE
MOISTURE WICKING & BREATHABLE



REINFORCED KNEES
& SLIDE ZONE



TWO BACK POCKETS WITH
REINFORCED STITCHING



WHIT 2580-06
GREY 2580-05

MSRP: **\$59.99**

ADULT SIZING: S, M, L, XL, 2X, 3X

YOUTH SIZING: YS, YM, YL, YXL

The **3N2 PRO CLUTCH PANTS** are a tapered cut, ankle length pant made with 3N2's high performance Poly-Stretch Lite material. A ventilated mesh panel for added comfort and breathability. This Men's baseball pant boasts an elastic gripper band to keep your pants up and jersey tucked.

Pants feature (30"- 34") adult inseam (23"-28") youth inseam) with reinforced belt loops and tunnels. Metal zippered fly front with two snap closure, two set-in back pockets, double-ply knees and slide zones for extra durability. Open unhemmed ankle finish with no elastic.

GREY



OUTSEAM PIPING & FULL CUSTOMIZATION AVAILABLE.
FOR DETAILS & PRICING: INFO@3N2SPORTS.COM

THROWBACK KNICKER

MEN'S

WHITE 2560-06
 GREY 2560-05

MSRP: \$39.99

ADULT SIZING: S, M, L, XL,
 XXL, XXXL

YOUTH SIZING: S, M, L, XL

The classic baseball pant. Reimagined. **3N2 MEN'S THROWBACK KNICKERS** are designed with a shorter throwback cut and made with high performance 14-ounce terry micro yarn 100% polyester. Features double front belt loops, non-roll woven elastic waist, metal zippered fly front with two snap closure, two set-in back pockets, and double-ply knees. 3N2 logo embroidered on back pocket. Outer seam piping can be added for an additional charge.



PIPING
 AVAILABLE



CLUTCH YOUTH PANT

YOUTH

WHITE 2600-06
 GREY 2600-05

MSRP: \$29.99

YOUTH SIZING: YXXS, YXS, YS,
 YM, YL, YXL



Put your little all-star in the high-performance, high quality 3N2 **CLUTCH PULL-UP PANT**. Lightweight and durable double-knit construction with reinforced knees. 100% moisture-wicking polyester, integrating soil guard which helps reduce dirt and grass stains. The wide elastic waistband and sturdy belt loops provide a comfy fit. Why does your little all-star have to wear a cheap pant when they could be rocking the high quality **3N2 CLUTCH PULL-UP PANT?**

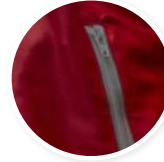


WILD THING CAGE JACKET

MEN'S



FLAT COLLAR WITH
1/4 ZIP FEATURE



ZIPPER POCKETS
AVAILABLE



SINCH CORD FITTED
TECHNOLOGY

SHORT SLEEVE

NAVY	3480-03
RED	3480-35
BLACK	3480-01
ROYAL	3480-02

LONG SLEEVE

NAVY	3485-03
RED	3485-35
BLACK	3485-01
ROYAL	3485-02

SHORT SLEEVE MSRP: \$69.99

LONG SLEEVE MSRP: \$74.99

ADULT SIZING: S, M, L, XL, 2XL, 3XL

YOUTH SIZING: S, M, L



K-ZONE COOL - DRI-FIT

MEN'S



NAVY	3200-03
RED	3200-35
BLACK	3200-01
ROYAL	3200-02
WHITE	3200-06
CHARCOAL	3200-55

MSRP: \$30.80 ADULT

ADULT SIZING: S, M, L, XL, 2XL, 3XL

YOUTH SIZING: YS, YM, YL, YXL

NUFIT

KNICKER / PRO

THE ORIGINAL YOGA-INSPIRED SOFTBALL PANT JUST GOT BETTER! STILL THE PERFECT FIT.

The patented **3N2 NuFIT 3/4 KNICKER PRO** maintains the innovative, fit-meets function design of the original NuFIT Knicker but with additional features and functionality. The 3/4 Knicker has an inseam length that finishes just below the knee. It employs 4-way stretch poly-spandex fabric in the hips, thighs, calves, and backside to snugly hug curves and provide free and easy movement. Rugged poly-knit construction in the knees, hips and the outside of the leg protect the pant from sliding. Comfort comes courtesy of a low-rise fit in the front, a higher rise in back to ensure coverage, and a soft elastic cuff that doesn't rub or cut like traditional elastic band cuffs. Two convenient back pockets are built into all NuFIT styles.

NUFIT KNICKER - PRO

BLACK	2680-01
WHITE	2680-06
NAVY	2680-03
RED	2680-35
ROYAL	2680-02
CHARCOAL	2680-55

MSRP: \$59.99
WOMEN'S SIZING:
 Adult XS - 3XL
 Youth S - L



- **BELT LOOPS**
- **LOWER FRONT RISE**
- **POLY SPANDEX**
- **HIGHER BACK RISE**
- **2 BACK POCKETS**
- **SLIDE ZONES**
- **3/4 INSEAM**
- **GRIPPER BAND**

Fastpitch athletes no longer have to roll their waistbands or worry about pulling up the back of their pants. Coaches have the benefit of a pant that looks great on all their players.

The fit and fabric of NuFit Knicker fastpitch softball pants provide a flattering look for the wide-range of body types playing fastpitch softball. Inspired by women's lifestyle apparel, the fit features a unique yoke with a lower front rise for comfort, while offering full coverage for the back side.

The NuFit Knicker is the first fastpitch softball pant to address the realities of athletic function and female form. No other pant on the market provides durability in the actual high abrasion areas that fastpitch softball athletes put to the test game in and game out on the diamond.

Other pants assume that softball players slide on their knees, while fastpitch athletes are actually coached to slide on the sides of their upper leg and inner knee, which is where NuFit Knicker fastpitch softball pants provide extra coverage.



**GRIPPER BAND
TECHNOLOGY**



**BETTER TUNNEL
FEATURE IN THE FRONT**

NUFIT JERSEY WOMEN'S

RED	2355-35
BLACK	2355-01
NAVY	2355-03
ROYAL	2355-02
GRAPHITE	2355-55
WHITE	2355-06

MSRP: \$32.99

ADULT SIZING: XS, S, M, L, XL, XXL

YOUTH SIZING: S, M, L



The **3N2 NUFIT JERSEY** is purpose-built to highlight feminine curves, providing superior comfort and freedom of movement. Its raglan sleeve allows for hyper-fluid throwing motion, moisture-wicking KZONE™ materials will keep you dry and on your game, and mesh-venting in 'hot spots' provides superior breathability.



CLASSIC KNICKERS WOMEN'S

GREY	2645-05
BLACK	2645-01
WHITE	2645-06

MSRP: \$54.99

ADULT SIZING: XS, S, M, L, XL, XXL, XXXL

YOUTH SIZING: S, M, L



PIPING
AVAILABLE

For those who prefer a traditional fastpitch pant, 3N2 offers the 100% stretch, 14-ounce, micro yarn polyester, below knee-length **CLASSIC KNICKERS**. Features a belt loop/tunnel waistband and two snap closures. Half-zip front fly, set-in back right pocket, double-ply knees and elastic leg hem. 3N2 logo embroidered on back pocket. Add outer seam piping for an additional charge.





GEAR

BACKPACKS+ BAGS



REVO BAT PACK



SMARTPHONE / HEADPHONE POCKET



PADDED STRAPS



VENTILATED SHOE COMPARTMENT



HELMET HANG HOOK

BLACK	3720-01
PURPLE	3720-12
VOLT YELLOW	3720-71
RED	3720-35
NAVY	3720-03
ROYAL	3720-02

MSRP: \$79.99

DIMENSIONS: 20" L x 16" W x 8" H

Hit the road with the rugged **REVO BAT PACK**. Constructed from heavy-duty 600-denier polyester, it features a huge main compartment with a mesh pocket, ventilated shoe compartment, zip lock pocket for valuables and a fleece lined media player zip pocket with interior-to-exterior port for headphone wires, which can also be used to store sunglasses. Bat Pak exterior holds 4 bats with drawstrings to keep your bats secure. Maximize comfort with adjustable padded shoulder straps and ergonomic foam cushion panels strategically placed to help reduce back stress and discomfort. Double-reinforced hook at the top of the bag for easy hanging in lockers or fences and an exterior bottom hook to hang your glove or helmet. Large centered 8 x 8-inch open space allows you to customize your bag with your team color or a silkscreen or embroidery of your team logo.



3N2 BIG BAG

BLACK 3960-01
 NAVY 3960-03

MSRP: \$109.99

DIMENSIONS: 32" L x 15" W x 16" H

Big, simple and functional. The **3N2 BIG BAG** is ideal for those who need a traditional, straightforward equipment bag. Its huge interior compartment is the perfect place to stuff your stuff. Features two zippered side compartments, a padded shoulder strap, roller wheels for easy transport and bottom rails to protect against wear and tear. This 32 x 15 x 16-inch bag is manufactured from rugged 600-denier polyester and features open surfaces for team logo screen printing or embroidery*.



1 1/2" ELASTIC BELT UNISEX

RED
 BLACK
 WHITE
 SILVER
 ROYAL
 NAVY
 COLUMBIA
 CARDINAL
 MAROON
 KELLY GREEN
 DARK GREEN
 PURPLE
 ORANGE
 BURNT ORANGE
 BROWN
 GOLD
 ATHLETIC GOLD
 VEGAS GOLD
 GRAPHITE

ADULT MSRP: \$8.99

ADULT SIZING: ONE SIZE FITS

ALL [32" - 46" WAIST]



ELASTIC BELT and matching leather tab ends with nickel-plated buckle. Fully adjustable.



FULL LENGTH SOCKS

UNISEX

3N2 FULL-LENGTH SOCKS are made of ultra-comfortable poly-cotton with elastane and feature a highly efficient moisture management finish that will keep you dry and comfortable when the pressure is on. Advanced stitching reinforces arch and ankle support and reduces foot fatigue.



ROYAL	4200-02
BLACK	4200-01
FOREST GREEN	4200-15
MAROON	4200-11
NAVY	4200-03
VEGAS	4200-08
COLUMBIA	4200-13
RED	4200-35
ORANGE	4200-09
WHITE	4200-06
PINK	4200-10
FUCHSIA	4200-36
CHARCOAL GRA	4200-55
PURPLE	4200-12

MSRP: \$13.99

UNISEX SIZING: S (1-5),

M (6-9), L (9.5-12),

XL (12.5-15)

PRO CLUTCH GLOVE

UNISEX

They'll know it's going to the nosebleeds when you step to the plate in the Pro Clutch Batting Glove. These are sluggers' gloves. Grade "A" digitally embossed sheepskin leather providing unsurpassed grip and durability. 4-way Popcorn Polyester spandex allow for air flow and enhanced mobility and comfort. A form fitting neoprene Velcro cuff provides a "locked-in" snug fit while leather strapping improves the fit and power feel. The palm of the glove is strengthened with leather overlays for increased durability and shock absorption. When you are going deep the rolled inner seams reduce friction. Going. Going. Still going. Gone.



BLACK	3810-01
NAVY	3810-03
RED	3810-35
WHITE	3810-06

MSRP: \$44.99

UNISEX SIZING: S (1-5),

M (6-9), L (9.5-12),

XL (12.5-15)

PRO GLITCH





PRO CLUTCH MAPLE WOOD BAT

- MAJOR LEAGUE PRO GRADE MAPLE
- TAPERED HANDLE ENSURES ULTIMATE SPEED & CONTROL
- BALANCED SWING WEIGHT FOR MAXIMUM DISTANCE & EXIT VELOCITY
- TESTED BY PROFESSIONALS



MADE IN THE USA

BLACK BT200-01
NATURAL BT200-77

MSRP: \$99.99

ARE YOU



Bullets



RUTHLESS
SOFTBALL



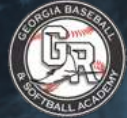
Pride



SNEAKY
CLEATS



CLUTCH?



- » FREE GEAR
- » MONETARY INCENTIVES
- » FULL HEAD TO TOE CUSTOM GEAR
- » ONLINE UNIFORM & SWAG STORE

SIGN UP NOW



3N2SPORTS.COM

SALES@3N2SPORTS.COM

3N2

TEAM LOCKER

TEAM MANAGEMENT CAN BE A HEADACHE

**PRESS CRUISE CONTROL
WITH 3N2 TEAM LOCKER**

- » **ONLINE TEAM STORES**
- » **NO SETUP FEES**
- » **NO SERVICE CHARGES**
- » **24/7 ACCOUNT REP**
- » **FULL CUSTOM UNIFORM ORDERING**
- » **FULL CUSTOM GEAR ORDERING**

**FANS ARE HAPPY AND
YOU GET PEACE OF MIND**



**TO GET STARTED, USE THE QR CODE OR VISIT
[SPIRIT.3N2SPORTS.COM/TEAMLOCKER](https://spirit.3n2sports.com/teamlocker)**





CUSTOM SUBLIMATION

MINIMUM ORDER APPLIES / CUSTOM LOGOS
PRODUCTION TIME: 4-6 WEEKS

MY3N2.COM | CUSTOMIZE COLORS | MAKE IT YOUR OWN | OUTFIT YOUR TEAM



FULL-CUSTOM SUBLIMATED JERSEYS

MEN'S CREW NECK

MSRP: **\$39.99**

YOUTH SIZING: YS, YM, YL, YXL

MEN'S SIZING: S, M, L, XL, XXL,

XXXL, 4XL-6XL Available for an extra cost.



Whatever your sport, **FULL-CUSTOM SUBLIMATED JERSEYS** offer you a nearly limitless way of personalizing your team's look.

MEN'S V-NECK

MSRP: **\$39.99**

YOUTH SIZING: YS, YM, YL, YXL

MEN'S SIZING: S, M, L, XL, XXL,

XXXL, 4XL-6XL Available for an extra cost.





TWO-BUTTON

MSRP: \$49.99

YOUTH SIZING: YS, YM, YL, YXL

MEN'S SIZING: S, M, L, XL, XXL,

XXXL, 4XL-6XL Available for an extra cost.



FULL-BUTTON

MSRP: \$54.99

YOUTH SIZING: YS, YM, YL, YXL

MEN'S SIZING: S, M, L, XL, XXL,

XXXL, 4XL-6XL Available for an extra cost.



FULL-BUTTON SLEEVELESS

MSRP: \$54.99

YOUTH SIZING: YS, YM, YL, YXL

MEN'S SIZING: S, M, L, XL, XXL,

XXXL, 4XL-6XL Available for an extra cost.

FABRICS



GAMEDAY



GAMEDAY LYTE



POLYZONE™



POLY LYTE™



INTERLOCK



NEON GREEN



NEON YELLOW

+ NEW NEON INKS

PRO CLUTCH PANTS

MEN'S

MSRP: \$55.99

YOUTH SIZING: YS, YM, YL, YXL

MEN'S SIZING: S, M, L, XL, XXL, XXXL

MEN'S INSEAM: AVAILABLE IN LONG, REGULAR, AND YOUTH

AVAILABLE BASE COLORS: WHITE, GREY

Creativity is calling. Take complete control of the design direction of our **3N2 FULL-CUSTOM SUBLIMATED KNICKERS** featuring our durable Pro Weight Interlock fabric and a double ply knee. Design beyond the 4" sublimated panels for a unique appearance placing logos or patterns on all panels. Customize color on back pocket trim and belt loops.



ADD LOGO OR NUMBER



GRIPPER-BAND TECHNOLOGY



FRONT BELT TUNNEL



VENTILATED PANEL FOR SWEAT REDUCTION

FABRIC



INTERLOCK

3N2 CLASSIC PANTS & KNICKERS

MEN'S

MSRP: \$55.99

YOUTH SIZING: YS, YM, YL, YXL

MEN'S SIZING: S, M, L, XL, XXL, XXXL

MEN'S INSEAM: AVAILABLE IN LONG, REGULAR, AND YOUTH

ANY COLOR AVAILABLE AS BASE COLOR

Creativity is calling. Take complete control of the design direction of our **3N2 FULLY SUBLIMATED CUSTOM PANTS** featuring our durable Pro Weight Interlock fabric and a double ply knee. Design beyond the 4" sublimated panels for a unique appearance placing logos or patterns on all panels. Customize color on back pocket trim and belt loops.



CUSTOM COLORS ON BELT LOOPS & TUNNELS



SELECT DESIGN EFFECT FOR EACH PANEL - FULL CUSTOMIZATION



ADD LOGO OR NUMBER

EXAMPLE



EXAMPLE



FABRIC



INTERLOCK

FULL SUB POLO SUBLIMATED

MSRP: \$48.99

WOMEN'S SIZING:

YOUTH: S - L | ADULT: XS - XXL

MEN'S SIZING:

YOUTH: S - XL | ADULT: S - XXXL



Your new favorite shirt. Infinite design options. Unbeatable comfort. The fully customizable **3N2 FULL SUB POLO** features lightweight construction and a look limited only by your imagination. Additional features include the ability to match collar and sleeve cuff colors, add pocket to chest, plus an option to add rib-knit cuff and collars to our standard POLYZONE and GAMEDAY materials.

SHORT SLEEVE HOODIE SUBLIMATED

MSRP: \$59.49

YOUTH SIZING: YS, YM, YL, YXL

WOMEN'S SIZING: S, M, L, XL, XXL

MEN'S SIZING: S, M, L, XL, XXL,

XXXL

Unlimited design options. Unbeatable comfort. Our oversized sublimated hoodie offers full customization features. Whether you want a summer or winter time hoodie we have you covered with our choice of warm and cold weather fabrics. Features large hood with drawstring closure. **SUBLIMATED HOODIE** with Sublimated Liner.



LONG SLEEVE HOODIE SUBLIMATED

MSRP: \$59.49

YOUTH SIZING: YS, YM, YL, YXL

WOMEN'S SIZING: S, M, L, XL, XXL

MEN'S SIZING: S, M, L, XL, XXL,

XXXL



Unlimited design options. Unbeatable comfort. Our oversized sublimated hoodie offers full customization features. Whether you want a summer or winter time hoodie we have you covered with our choice of warm and cold weather fabrics. Features large hood with drawstring closure. **SUBLIMATED HOODIE** with Sublimated Liner.

COLLARED 1/4 ZIP CAGE JACKET SUBLIMATED



1/4 ZIP FEATURE

A versatile quarter zip jacket with elastic hem toggle for comfort adjustment. Great for the diamond, workouts or everyday wear.

MSRP: \$45.49

YOUTH SIZING: YS, YM, YL, YXL

MEN'S SIZING: S, M, L, XL, XXL, XXXL

WILD THING 1/4 ZIP SUBLIMATED



1/4 ZIP FEATURE

MSRP: \$69.99

UNISEX YOUTH SIZING: S, M, L, XL

ADULT SIZING: S, M, L, XL, 2XL, 3XL

LONG SLEEVE WILD THING 1/4 ZIP SUBLIMATED



1/4 ZIP FEATURE

MSRP: \$69.99

UNISEX YOUTH SIZING: S, M, L, XL

ADULT SIZING: S, M, L, XL, 2XL, 3XL

FULL-CUSTOM SUBLIMATED FASTPITCH JERSEYS

RACERBACK V-NECK

MSRP: **\$39.99**

YOUTH SIZING: YS, YM, YL,

WOMEN'S SIZING: XS, S, M, L,

XL, XXL

UNLIMITED LOGOS



UNLIMITED COLORS



Make an impact. Our fastpitch uniform sets are a fashionable way to customize the look of your team. Our jerseys offer several neck and sleeve options.

ADD YOUR NAME & NUMBER



LIMITLESS DESIGN EFFECTS

FABRICS



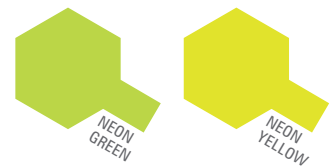
GAMEDAY

GAMEDAY LYTE

POLYZONE™

POLY LYTE™

INTERLOCK



+ NEW NEON INKS

+ SEE MY3N2.COM FOR FULL RANGE OF PATTERNS AND CUSTOMIZATION OPTIONS

V-NECK CAP SLEEVE

MSRP: \$39.99



FAUX FULL BUTTON

MSRP: \$54.99



FULL BUTTON

MSRP: \$54.99



TWO-BUTTON

MSRP: \$44.99



V-NECK SLEEVELESS

MSRP: \$39.99



V-NECK SHORT SLEEVE

MSRP: \$39.99



WOMEN'S FULL-CUSTOM SUBLIMATED KNICKERS

MSRP: \$55.99

YOUTH SIZING: YS, YM, YL

ADULT SIZING: XS, S, M, L, XL, XXL

Look as good as you play. Play great in fully customizable knickers featuring rear pocket, half-zip front fly, and front snap enclosure that come in Pro Weight Interlock. Full customization means total control over design and material.

FABRIC



INTERLOCK



COMPRESSION LEGGINGS

FULL LENGTH MSRP: \$41.99

3/4 LENGTH MSRP: \$38.49

WOMEN'S SIZING:

YOUTH: S - L | ADULT: XS - XXL



This super-sleek capri features a unique compression fabric construction, providing a flattering fit for running and training sessions. Made from 3N2's proprietary, 100% Polyester, "silk" compression fabric that provides unrivaled form-hugging support, and a lightweight and comfortable moisture wicking material that allows bodies to breathe. Super comfy wide waistband with drawstring and inside pocket. Available in 3/4 Length and Full Length.



COMPRESSION SHORTS

MSRP: \$34.99

WOMEN'S SIZING:

YOUTH: S - L | ADULT: XS - XXL

3N2 compression shorts feature a unique compression fabric construction, providing a flattering fit for running and training sessions. Lightweight and comfortable wicking material transfers moisture away from your skin and allows your body to breathe. Made of 3N2's proprietary, 100% Polyester, "silk" compression fabric that provides unrivaled form-hugging support. Hidden pocket on the inside.



HEADBAND



MSRP: \$14.99

WOMEN'S SIZING:
ONE SIZE FITS ALL

SUBLIMATED ARM SLEEVES



MSRP: \$17.49

SIZING: XS, S, M, L, XL, XXL

There's no reason why you shouldn't be at the top of your game, every game. Tight fitting yet breathable, our **ARM SLEEVES** offer uncompromised blood circulation and crucial support for the muscles and tendons that keep you prime. Specialized fabric abates moisture and maintains its comfortable feel, all the while enhancing the professional appearance of your team's uniform with customizable design and logo embellishment.

FULL-CUSTOM SUBLIMATED SHORTS



Creativity is calling. Take complete control of the design direction of our **FULL-CUSTOM SUBLIMATED SHORTS**. Shorts have drawstring and side pockets.

MSRP: \$31.49

UNISEX YOUTH SIZING: S, M, L, XL
ADULT SIZING: S, M, L, XL, XXL,
XXXL

INSEAM: 9" GRADED

LIMITLESS
DESIGN EFFECTS



UNLIMITED COLORS



GO RETRO



CUSTOM HEADWEAR

MINIMUM QUANTITIES: 12 PER STYLE

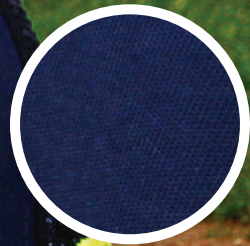
PRODUCTION TIME: 2-3 WEEKS

STARTING AT \$24.99

EMBROIDERED
3D LOGO



MOISTURE
MANAGEMENT FABRIC



BACK EMBROIDERY
AVAILABLE



CHOOSE: COLOR, FABRIC, LOGO | STYLES: FLEX-FIT, SNAPBACK, VELCRO

PANT EMBELLISHMENT CHART

STOCK PANT BRAID PROGRAM **MSRP: \$15.99**

AVAILABLE WIDTH: 3/16" ONLY

AVAILABLE COLORS FOR STOCK BRAID

WHITE	FOREST GREEN
ORANGE	COLUMBIA BLUE
SCARLET	ROYAL
CARDINAL	DARK NAVY
MAROON	DARK PURPLE
KELLY GREEN	BLACK

APPROXIMATE
BRAID SIZE



PREVIEW SIZE IS NOT TO SCALE



PROGRAM DETAILS:

TURNAROUND TIME: Ships in 2-3 weeks from order approval

MINIMUM ORDER: 12 pairs

Braid can be applied to any 3N2 stock pant

CUSTOM PANT BRAID PROGRAM

Contact 3N2 sales representative for pricing information

WHITE	FOREST GREEN	PINK	TEXAS ORANGE
ORANGE	COLUMBIA BLUE	HOT PINK	TEAL
SCARLET	ROYAL	ATHLETIC GOLD	BROWN
CARDINAL	DARK NAVY	TENNESSEE ORANGE	GREY
MAROON	DARK PURPLE	LIME GREEN	
KELLY GREEN	BLACK	VEGAS GOLD	



PIPING (INCHES)	COLORS AVAILABLE
3/16"	1 Color
3/8" and 1/4"	2 Color
1/2"	1, 2, or 3 Color
1"	1, 2, or 3 Color
1.5"	1, 2, or 3 Color
2"	1, 2, or 3 Color

PROGRAM DETAILS:

TURNAROUND TIME: Ships in 4-5 weeks from order approval

MINIMUM ORDER: 12 pairs

Braid can be applied to any 3N2 stock pant

ADDITIONAL INFORMATION:
Please note: 3N2 Pant Embellishment program is for After Production Braid applied to 3N2 Stock pants.

SUBLIMATION COLORS

3N2 has developed our sublimation color swatches based on the most popular colors used by sports teams around the world. Our art team has done extensive research to ensure that the selected Pantone colors match up with the most common shades of each color. The use of fades or special effects, such as glowing edges or shadows, will alter the appearance of these colors. In addition, colors may vary slightly when printed on different fabrics.

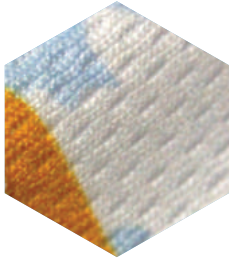
3N2 cannot accept returns for product based on final color output, unless there is proven to be a significant variation between the color selected and that which is printed on the final garment. If you feel that an improper color was used in the printing of your garment, please contact your dealer or sales rep and 3N2 will perform a thorough investigation to determine the nature of the issue.

Furthermore, 3N2 does its very best to match the colors used in sublimation with those used for all other programs and products in our catalog. However, the use of different fabrics and inks for different products makes it impossible to get an exact match between a sublimation product and a footwear or apparel item outside of the sublimation program. 3N2 will not be held responsible for any discrepancies in colors across product lines and returns will not be accepted on those terms. If you have any questions on how the products in your team package will match up, please feel free to request samples from your local dealer or sales rep.



The colors and Pantone colors shown above reflect the published Pantone colors closest to our exclusive 3N2 colors. These numbers and swatches should be used as a reference point only, as the 3N2 colors used for printing may vary slightly. Please contact your local dealer or sales rep with any questions prior to signing off on artwork.

RECOMMENDED FABRIC CHOICES

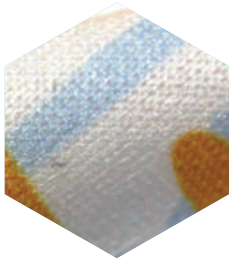


GAMEDAY

Fabric Type: Polyester
Finish: Flat back textured mesh
Properties: Moisture management
190GSM

GAMEDAY LYTE

Fabric Type: Polyester
Finish: Flat back textured mesh
Properties: Moisture management
170GSM

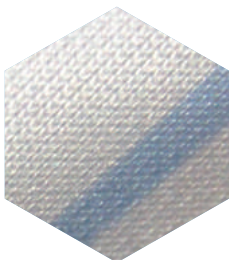


POLYZONE™

Fabric Type: Polyester
Finish: Smooth, soft finish
Properties: Moisture management
140GSM

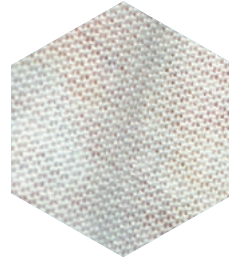
POLY LYTE™

Fabric Type: Polyester
Finish: Smooth, soft finish
Properties: Moisture management
130GSM



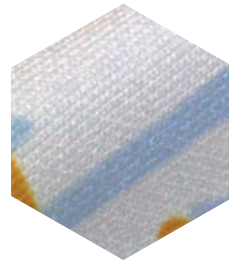
INTERLOCK

Fabric Type: Polyester
Finish: Tight knit, smooth surface, firm
Properties: Moisture management, durability
260GSM



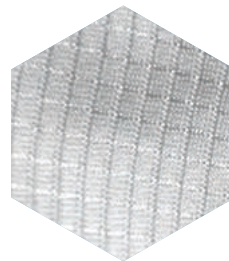
POLYCOTTON

Fabric Type: Polyester
Finish: Smooth, soft cotton finish
Properties: Moisture management
140GSM



TRICOT

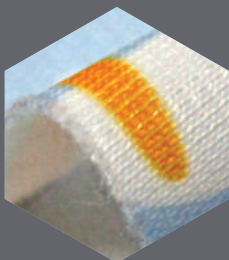
Fabric Type: Polyester
Finish: Textured exterior with smooth interior
Properties: Moisture management
160GSM



POLYCARBON

Fabric Type: Polyester
Finish: Textured exterior with smooth waffle finish
Properties: Moisture management
160GSM

***INQUIRE FOR ADDITIONAL
MATERIAL OPTIONS***



POLY FLEECE

Fabric Type: Polyester
Finish: Smooth exterior with wool like interior
Properties: Moisture management, holds warmth in.
220GSM



THICK FLEECE

Fabric Type: Polyester
Finish: Smooth exterior with thick wool like interior
Properties: Moisture management, holds warmth in.
260GSM

GENERAL FONTS CHART

STYLE	LETTER	NUMBER
ACCHEN BOLD	A B C D E	0 1 2 3 4
BEANTOWN	A B C D E	0 1 2 3 4
ANGELS	A B C D E	0 1 2 3 4
BOMBER	<i>A B C D E</i>	<i>0 1 2 3 4</i>
BOSOX	A B C D E	0 1 2 3 4
BRUSH SCRIPT	<i>A B C D E</i>	<i>0 1 2 3 4</i>
ATHLETIC	A B C D E	0 1 2 3 4
COBALT	A B C D E	0 1 2 3 4
FRANCHISE BOLD	A B C D E	0 1 2 3 4
CRACKER JACK	<i>A B C D E</i>	<i>0 1 2 3 4</i>
FULL BLOCK	A B C D E	0 1 2 3 4
DODGER SCRIPT	<i>A B C D E</i>	NUMBERS UNAVAILABLE
DUCKFACE	A B C D E	0 1 2 3 4
GALAXY	<i>A B C D E</i>	<i>0 1 2 3 4</i>
FANCY BLOCK	A B C D E	0 1 2 3 4
MICHIGAN	A B C D E	0 1 2 3 4
OLD ENGLISH	A B C D E	0 1 2 3 4
MAVERICK	A B C D E	0 1 2 3 4
QUEST	A B C D E	0 1 2 3 4
STANFORD	A B C D E	0 1 2 3 4
TIMBERWOLVES	A B C D E	0 1 2 3 4
SCRIPT	<i>A B C D E</i>	<i>0 1 2 3 4</i>
SIGNBOARD	A B C D E	0 1 2 3 4

Lettering Configurations:

VERTICALLY ARCHED *Padres* **INCLINING** **STRAIGHT**

Tail Sweeps:



SIZING TIPS

Our numeric sized products (such as some custom apparel) are designed to fit specific measurements. All of our size charts reference body measurements.

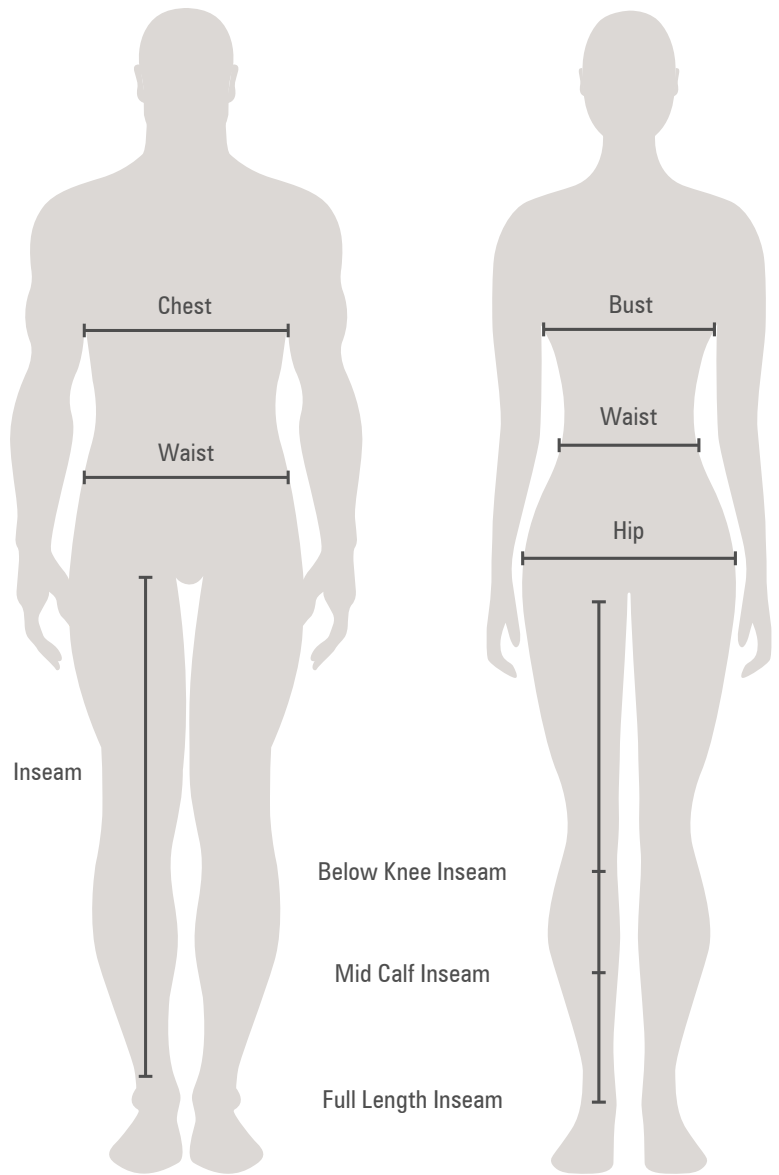
HOW TO TAKE BODY MEASUREMENTS

If a cloth measuring tape is not available, use a string and then measure the length against a yard stick. If possible, have someone else take the measurement.

Chest/Bust – With your arms relaxed at your side, measure the circumference of your chest. Hold the end of the tape at the fullest part of your bust, go under your armpits, around your shoulder blades and back to the front of your chest. Keep the tape level and taut, but not stretched.

Waist – Stand straight up and measure your waist at your “natural waistline” which is located above your belly button. Hold the end of the tape at the front of your body and circle around the back to measure the circumference of your waist. No cheating – don’t suck in your stomach.

Hip – Start the tape at one hip and circle the tape around the largest part of your backside and over your other hip until you are back where you started. Keep the tape level and taut, but not stretched.



WOMEN'S SIZING

Size	XS	S	M	L	XL	2XL
Bust	31.5-33	33.5-35	35.5-37	37.5-40	40.5-43	43.5-46
Waist	23.5-25	25.5-27	27.5-29	29.5-32	32.5-35	35.5-38
Hip	33.5-35	35.5-37	37.5-39	39.5-42	42.5-45	45.5-48

MEN'S SIZING

Size	S	M	L	XL	2XL	3XL
Chest	35.5-37	37.5-40	40.5-43	43.5-46	46.5-48	48.5-52
Waist	28-30	30-33	33-36	36-40	40-44	44-46

GIRL'S SIZING

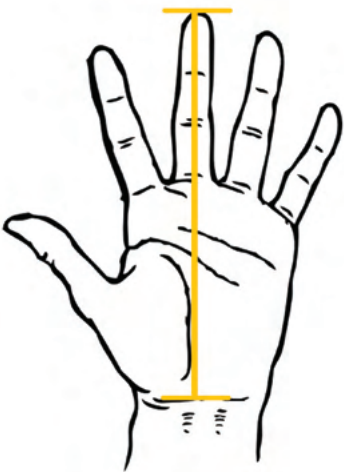
Size	GS	GM	GL
Bust	25.5-27.5	28-30.5	31-33.5
Waist	20-22	22-23	23-25

YOUTH SIZING

Size	YXS	YS	YM	YL	YXL
Chest	—	27-28.5	29-31.5	32-34.5	35-37
Waist	22-23	23-25	24-26	26-28	28-30

STOCK & CUSTOM GLOVE SIZE CHART

If a cloth measuring tape is not available, use a string and then measure the length against a yard stick. If possible, have someone else take the measurement.



ADULT SIZING

Size	XS	S	M	L	XL	2XL	3XL
Measurement	7 1/4"-7 1/2"	7 1/2"-7 3/4"	7 3/4"-8"	8"-8 1/4"	8 1/4"-8 1/2"	8 1/2"-8 3/4"	8 3/4"-9"

YOUTH SIZING

Size	YS	YM	YL
Measurement	6"-6 1/4"	6 1/4"-6 1/2"	6 1/2"-6 3/4"





TEAM CLUTCH



3N2SPORTS.COM

3N2, LLC | 111 ATLANTIC ANNEX POINT #1 MAITLAND, FL, 32751

P: 407.862.3622 | 877.362.1440

F: 800.964.0175 | E: SALES@3N2SPORTS.COM